

**EQUIUM**

The perfect synthesis of design and performance:

# The Equium 2000

- Advanced desktop technology in an ultra-stylish PC package
- 15" TFT LCD display with digital link to the PC
- Wireless USB keyboard and mouse for maximum convenience
- Full Plug & Play functionality via 2 USB interfaces and SelectBay modules
- PC unit integrated into base of display for minimum footprint
- Built-in Ethernet adapter for full network connectivity



Choose freedom.

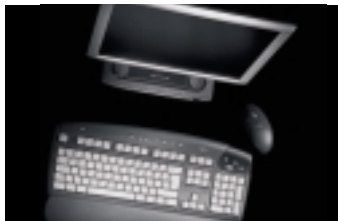
**TOSHIBA**

# EQUIUM

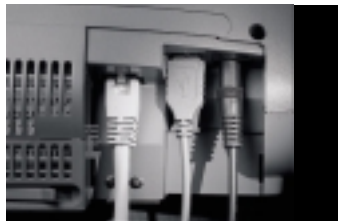
Toshiba's Equium 2000 is a creative fusion of desktop and notebook technologies. It combines the practical advantage of a notebook with the latest desktop features in an elegant PC design. But without compromising on performance. The result is a groundbreaking new solution: a desktop that builds on our years of experience of mobile computing. Contact your Toshiba dealer for more details of the future of computing.



Includes Windows® 98 Second Edition – the home version of the world's favorite software.



Visionary technologies: all core system components are housed in the ultra-slim base of the display, with a wireless keyboard and mouse for maximum flexibility.



Investment protection: the Equium 2000 gives you tomorrow's interface options today – USB ports, PC Card slots and an Ethernet adapter.



Pin sharp: the 15" TFT colour display features a digital link to the PC unit and combines outstanding image quality with superb ergonomics.



The integrated Plug & Play-compatible SelectBay slot provides maximum flexibility and a host of expansion options.

<b>Model</b>	Equium 2000, distinctive all-in-one desktop LCD PC featuring space-saving design
<b>Processor</b>	Intel® Pentium® III processor 650 MHz, 100 MHz Front Side Bus, 256 KB 2nd level cache, Intel® 440BX chipset
<b>Display</b>	15.0" (38.1 cm) TFT active matrix colour display, 1,024 x 768 x 16.7 million colours
<b>Hard disk</b>	6.0 GB <sup>1)</sup> capacity, UDMA-33 technology
<b>Memory</b>	64 MB SDRAM, expandable to 256 MB
<b>Diskette drive</b>	External 1.44 MB diskette drive
<b>CD-ROM drive</b>	SelectBay 24-speed CD-ROM drive (max.), data transfer 3600 KB/s (max.), average random access time 125 ms
<b>Graphics adapter</b>	ATI Rage 128 VR, 8 MB internal Video RAM, 3D acceleration
<b>External video modes</b>	Max. 1,600 x 1,200 x 65,536 colours, up to 85 Hz refresh rate non-interlaced
<b>Keyboard</b>	Wireless keyboard with mouse port, 105 keys, 12 function keys, Euro key, MF II-compatible with Windows® keys, special audio and Internet keys, sleep key
<b>Mouse</b>	Wireless mouse with three buttons including wheel
<b>Communication</b>	100Base-TX, 10Base-T LAN Ethernet (integrated)
<b>Sound system</b>	Sound Blaster Pro compatible, MIDI support, Direct 3D Sound, integrated stereo speakers
<b>BIOS</b>	Supports ACPI, DMI BIOS, Plug and Play, APM, PnP, DPMS, VESA, DDC, UDMA-33, USB
<b>Interfaces</b>	2 x USB ports (without external hub), RJ 45 (LAN), Fast Infrared Port (FIR), 2 x PC Card Type II or 1 x PC Card Type III, FDD connector
<b>Expansion</b>	Memory: 2x DIMM sockets (one used for standard configuration)
<b>Power supply</b>	External AC adapter 60 W, autosensing 100–240 V for worldwide usage
<b>Bundled software</b>	Windows® 98 pre-installed (on request also available with Windows® NT 4.0 and Windows® 2000 <sup>2)</sup> , Intel® LANDesk® Client Manager on CD-ROM
<b>Bundled hardware</b>	Wireless keyboard, wireless wheel mouse, wireless mouse and keyboard receiver (USB), external diskette drive, SelectBay 24-speed CD-ROM drive
<b>Special features</b>	Distinctive contemporary design, SelectBay expansion options, USB ports for future compatibility, TFT active matrix color display with digital link to PC unit, wireless keyboard and wireless wheel mouse, 100Base-TX, 10Base-T LAN Ethernet (integrated), lock and double password systems protect against theft and unauthorized access, lock system can be combined with other security devices (e.g. Kensington Cable Lock)
<b>Size (W x D x H) and weight</b>	350 x 212 x 389 mm, 5.8 kg
<b>Warranty</b>	3-year warranty
<b>Options</b>	SelectBay options: diskette drive, 24-speed CD-ROM drive, DVD-ROM drive (for more information please refer to our options brochure)

<sup>1)</sup> One GB means one billion bytes <sup>2)</sup> Please note: From two Microsoft operating systems pre-installed you can choose only one by one-time selection. If you desire the rejected operation system after you made a selection you need to acquire and pay for such operating system as a separate transaction.

TEG December 2000, Art. No. B2612E. Microsoft and Windows are either registered trademarks or trademarks of Microsoft Corporation in the United States and/or other countries. All trademarks are acknowledged. Product design specifications and colours are subject to change without notice and may vary from those shown. Errors and omissions excepted.

[www.toshiba-europe.com/computers](http://www.toshiba-europe.com/computers)

For further information on the Toshiba range of PCs contact your nearest Toshiba Authorised Reseller or visit the Toshiba web site: [www.toshiba-europe.com/computers](http://www.toshiba-europe.com/computers)

Choose freedom.  
**TOSHIBA**